

Restore “Pyramid Demo 2016.abf” file and set up OLAP data source in Pyramid



Step 1 Extract contents of Downloaded Zip File.

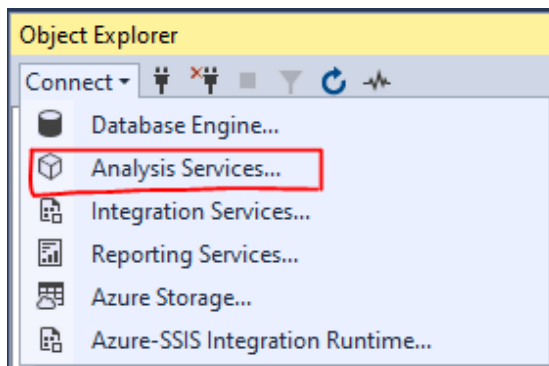
Name	Date modified	Type	Size
Pyramid Demo 2016.abf	4/21/2022 10:24 AM	ABF File	150,252 KB

Step 2 Save a copy of **Pyramid Demo 2016.abf** file in the Analysis Services Server Path (Similar to the path below). This folder needs to be accessed from the same server that pyramid is installed.

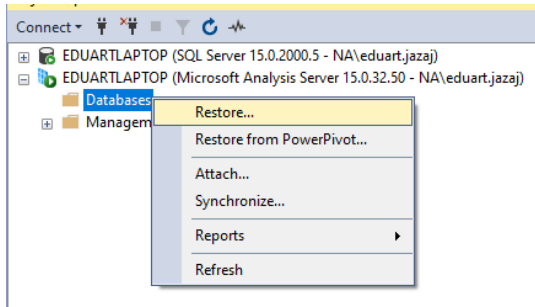
File Explorer path: This PC > Windows (C:) > Program Files > Microsoft SQL Server > MSAS15.MSSQLSERVER > OLAP > Backup

Name	Date modified	Type	Size
Pyramid Demo 2016.abf	4/21/2022 10:24 AM	ABF File	150,252 KB

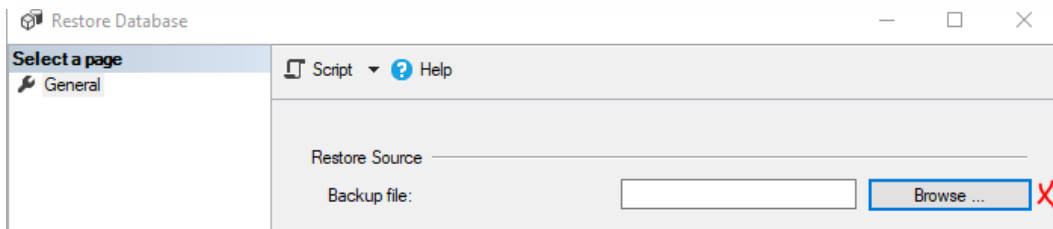
Step 3 Access Microsoft SQL Server Management Studio and connect to “Analysis Services” with your credentials.



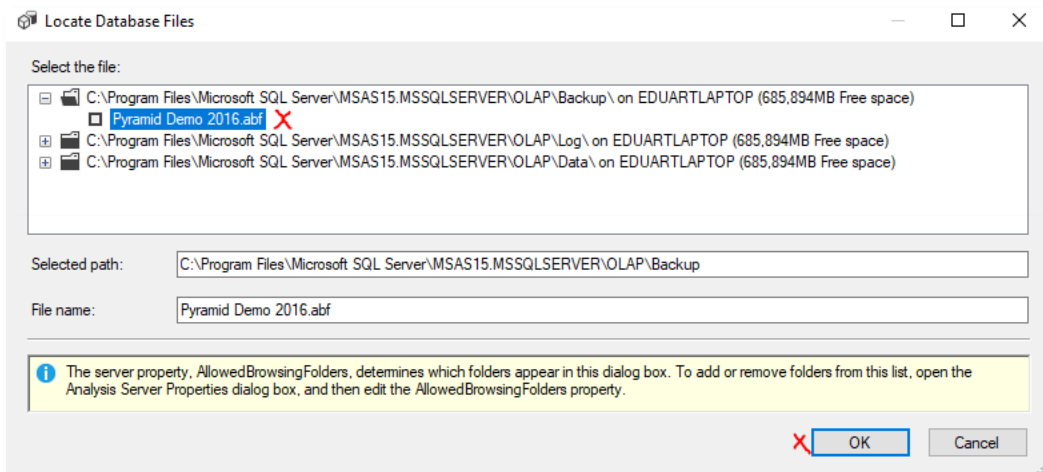
Step 4 Right Click on “Databases” and select “Restore”.



Step 5 The following window will pop up, click on “Browse”.



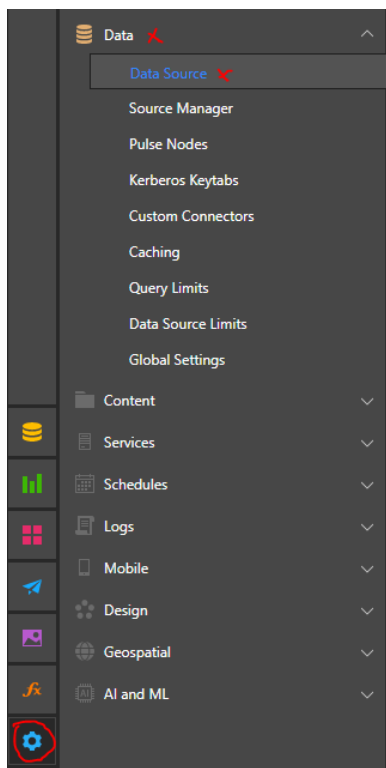
Step 6 Navigate to the correct path where **Pyramid Demo 2016.abf** file was placed earlier (Step 2), select the file, then click “OK”.



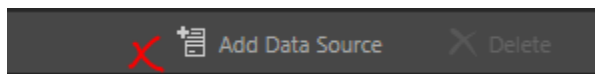
Step 7 Copy the Server Name (this information can be retrieved also by typing cmd on your windows search and then type "hostname" > and press enter in your keyboard, server name will show up on the screen as **host name**).

Server name:

Step 8 Access Pyramid > Click on **Admin Console** > Select **Data** > select **Data Source**.



Step 9 Select "Add Data Source".



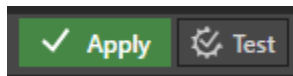
Step 10 Set up the new data source same as the set up below.

- Enter **Server Name or IP address** copied on step 7.
- Enter your **Domain\User or UPN**.
- The remaining fields should be populated similar, unless different settings are preferred.

The screenshot shows the 'Add Data Source' dialog box. It is configured with the following settings:

- Server Type:** MS OLAP
- Tenant:** default
- Use 'Security & Metadata' overlays:** checked
- Connection:**
 - Display Name: OLAP
 - Server Name or IP Address: LAPTOP1
 - Server Instance Name: (empty)
 - Port: (empty)
 - Connection Type: Direct
- Security:**
 - Windows Domain Access: Don't use cube security
 - Use global account settings: unchecked
 - Domain\User or UPN: PyramidUserName
 - Password: (empty)
 - Use Multi Pass Authentication: checked
 - Machine Account Fallback: unchecked
- Optional:**
 - Additional Parameters: (empty)
 - MDX Compatability: 2

Click **test**, and if no errors found then click **Apply**.



Step 11 Open a new **discover** > click on **Explorer** > click on **SSAS Cubes** which is the Display Name selected in step 10. The Database "**Pyramid Demo 2016**" will show up in the list. Finally select a data model, and start building content.

